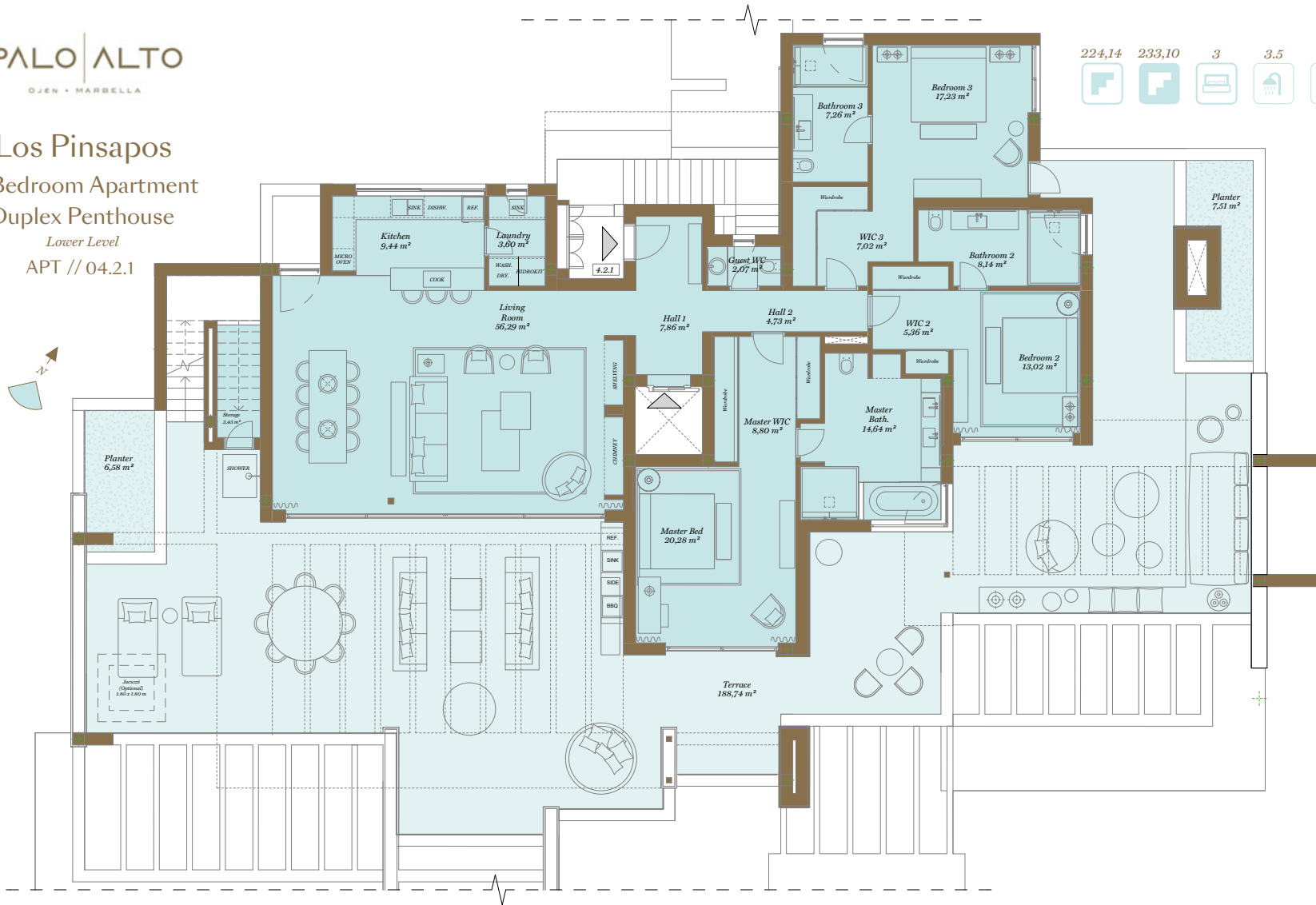
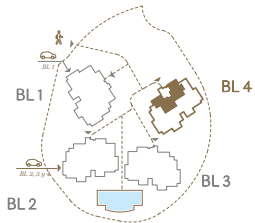


Los Pinsapos
3 Bedroom Apartment
Duplex Penthouse
Lower Level
APT // 04.2.1

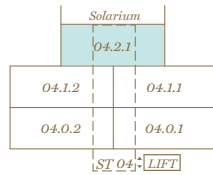


This document is for information only. The areas and measurements shown are approximate and may be modified for technical reasons and/or administrative issues. All furniture shown is for illustrative purposes.
*APT: Apartment // SOL: Solarium // BAS: Basement // ST: Stairway - Floor - Apartment // C.A.W.E.U.: Common Area With Exclusive Use

Site Plan



Block 04



Apartment | 04.2.1

Indoor Usable Area	185,71 m ²
Terrace Usable Area	188,74 m ²
Total Usable Area	391,99 m ²

Indoor Constructed Area	224,14 m ²
Terrace Constructed Area	233,10 m ²
Total Constructed Area	457,24 m ²

Garden (C.A.w.E.U.)

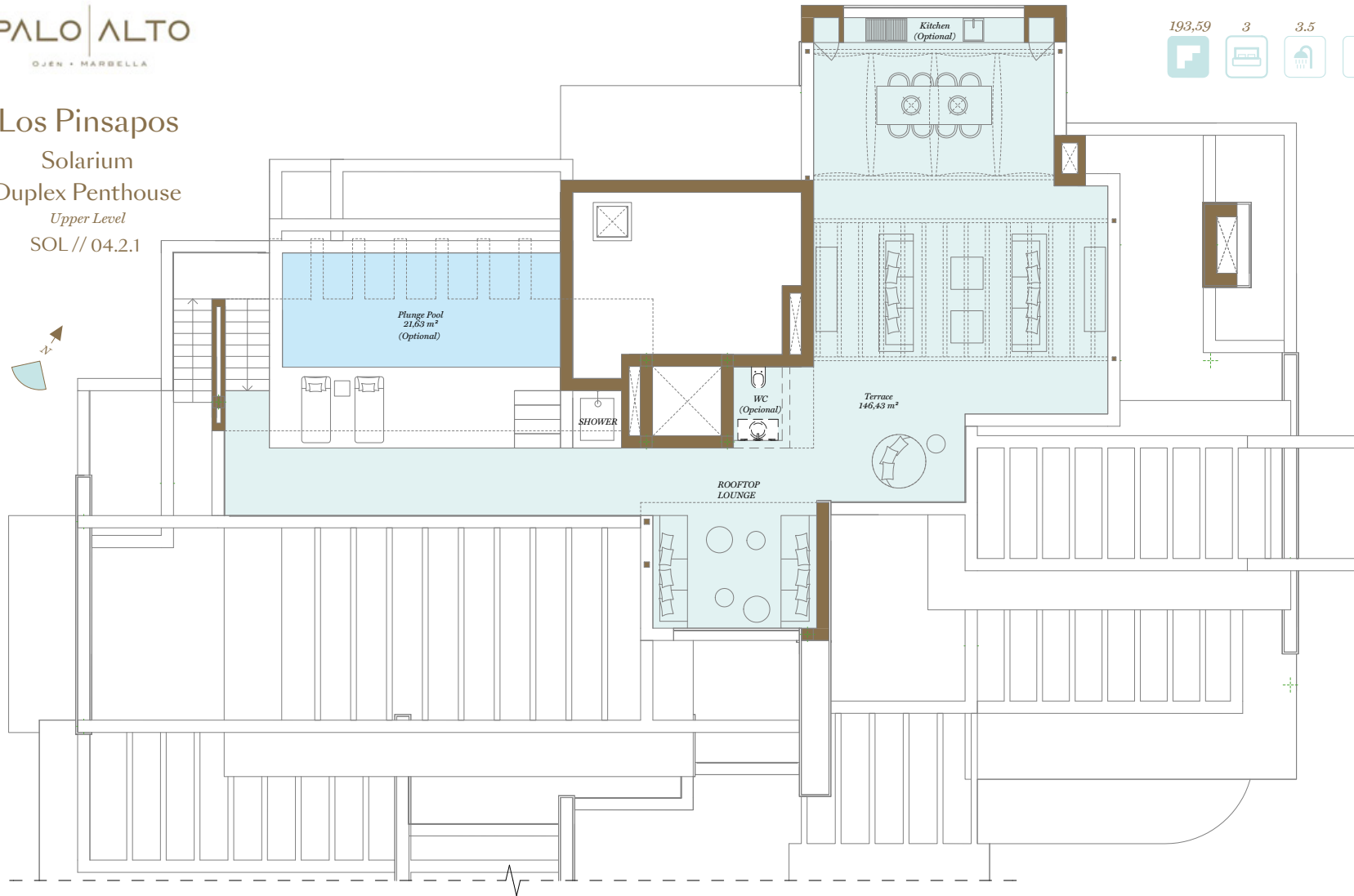


This document is for information only. The areas and measurements are approximate and may be modified for technical reasons and/or administrative issues. All furniture shown is for illustrative purposes. Images are computer generated and are indicative only. Prices shown without IVA (VAT) at 10%. The developer reserves the right to change the prices at any time.

Este documento es sólo informativo. Las áreas y medidas son aproximadas y podrían sufrir modificaciones por razones técnicas y/o administrativas. Todos los muebles e imágenes mostradas han sido elaboradas por ordenador para fines orientativos. Precios sin IVA al 10%. El promotor se reserva el derecho de cambiar los precios en cualquier momento.

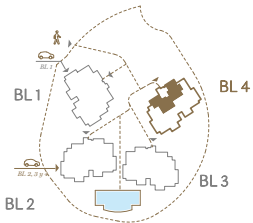
Los Pinsapos
Solarium
Duplex Penthouse
Upper Level
SOL//04.2.1

193,59 3 3.5 2 1

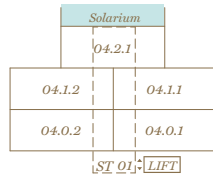


This document is for information only. The areas and measurements shown are approximate and may be modified for technical reasons and/or administrative issues. All furniture shown is for illustrative purposes. *API: Apartment // SOL: Solarium // BAS: Basement // Apartment Code: Stairway - Floor - Apartment // C.A.W.E.U.: Common Area With Exclusive Use

Site Plan



Block 04



Solarium | 04.2.1

Indoor Usable Area

Terrace Usable Area

Total Usable Area

Garden (C.A.w.E.U.)

168,07 m²

Indoor Constructed Area

Terrace Constructed Area

Total Constructed Area

193,59 m²



This document is for information only. The areas and measurements are approximate and may be modified for technical reasons and/or administrative issues. All furniture shown is for illustrative purposes. Images are computer generated and are indicative only. Prices without IVA (VAT) at 10%. The developer reserves the right to change the prices at any time.

Este documento es sólo informativo. Las áreas y medidas son aproximadas y podrían sufrir modificaciones por razones técnicas y/o administrativas. Todos los muebles e imágenes mostradas han sido elaboradas por ordenador para fines orientativos. Precios sin IVA al 10%. El promotor se reserva el derecho de cambiar los precios en cualquier momento.