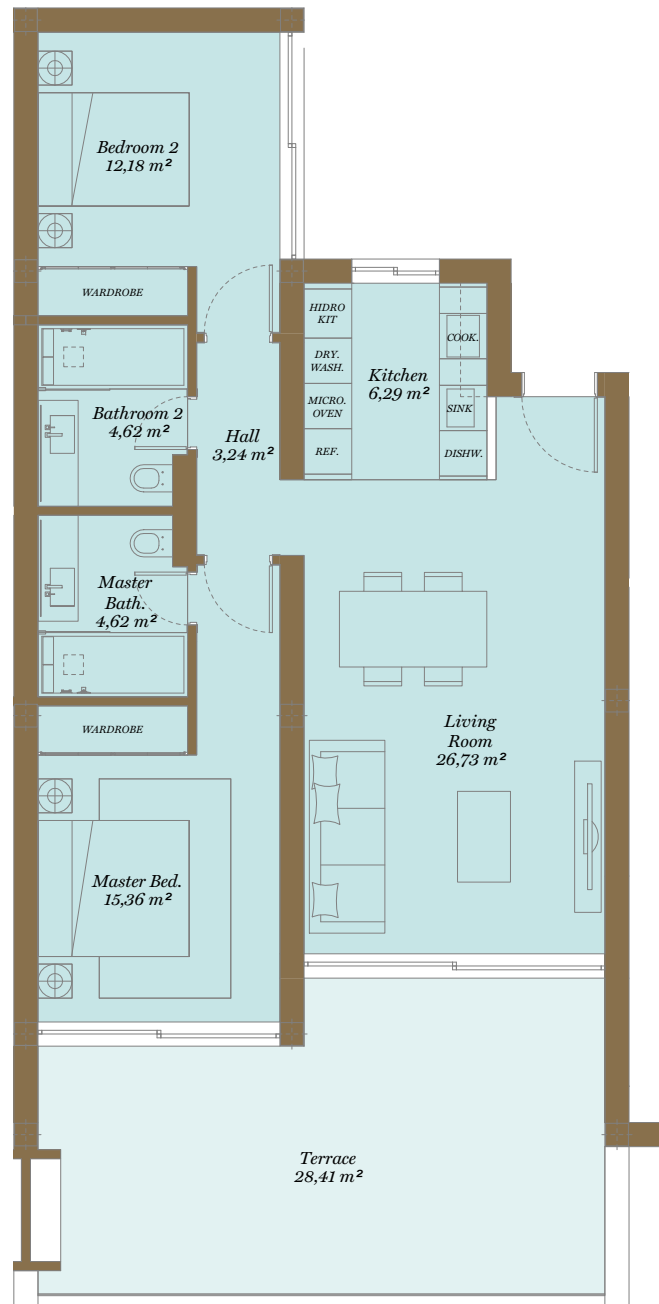


Los Eucaliptos

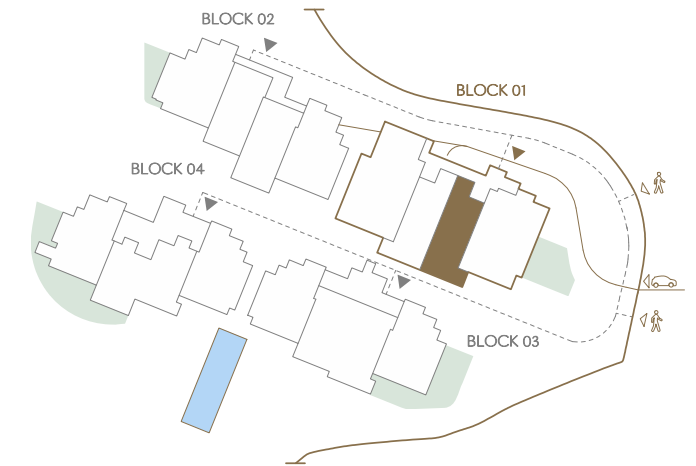
2 Bedroom Apartment

APT // 01.0.2



86,94 31,32 2 2 1 1

Site Plan



Apartment | 01.0.2

	01.2.2	01.2.1	
01.1.4	01.1.3	01.1.2	01.1.1
01.0.4	01.0.3	01.0.2	01.0.1
	ST 01	LIFT	

Apartment | 01.0.2

Indoor Usable Area	73,04 m ²
Terrace Usable Area	28,41 m ²
Total Usable Area	101,45 m²
Indoor Constructed Area	86,94 m ²
Terrace Constructed Area	31,32 m ²
Total Constructed Area	118,26 m²
Garden (C.A.w.E.U.)	—



This document is for information only. The areas and measurements shown are approximate and may be modified for technical reasons and/or administrative issues. All furniture shown is for illustrative purposes.

*APT: Apartment // SOL: Solarium // BAS: Basement // Apartment Code: Stairway - Floor - Apartment // C.A.W.E.U. : Common Area With Exclusive Use

