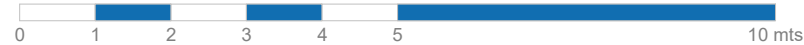
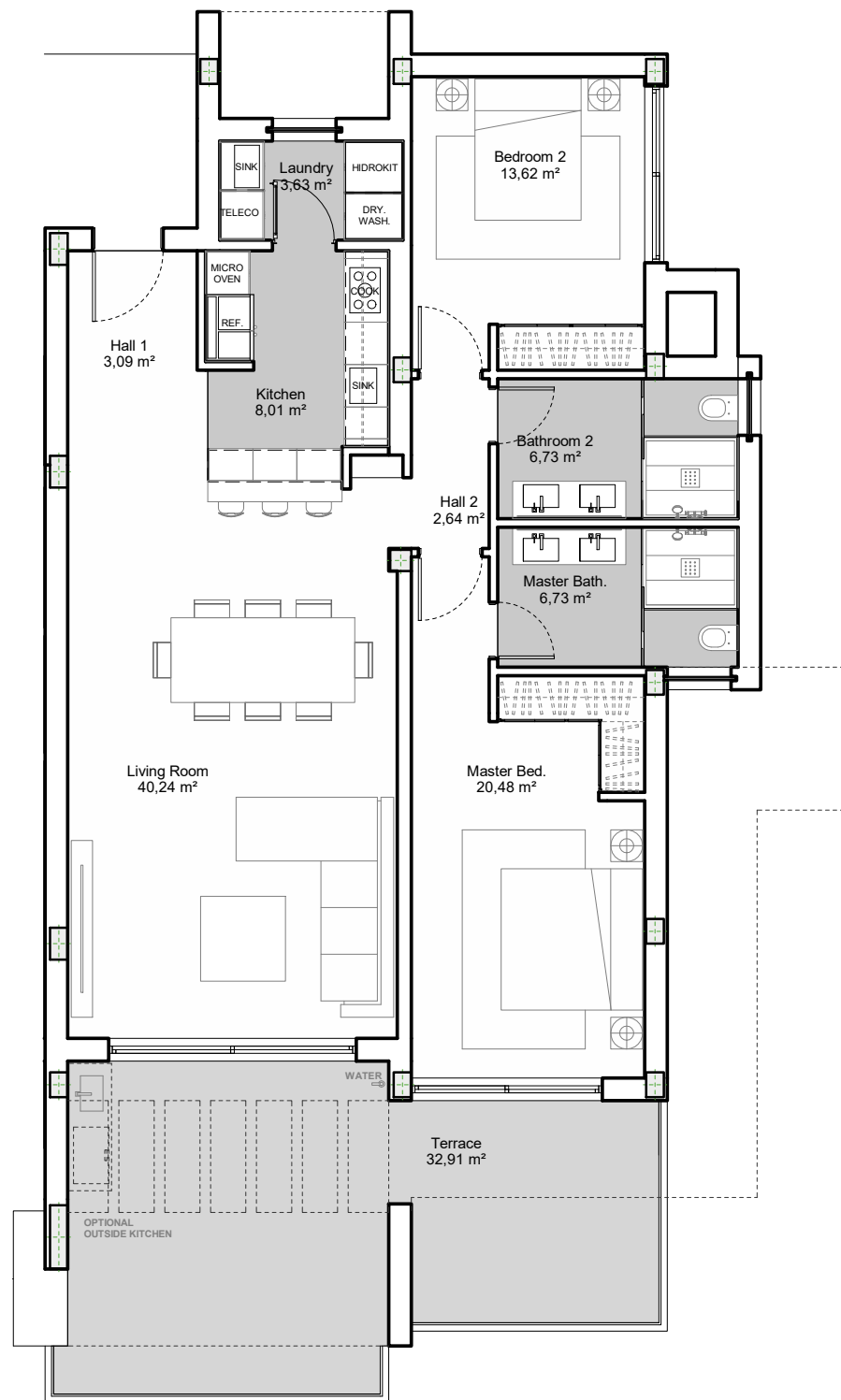


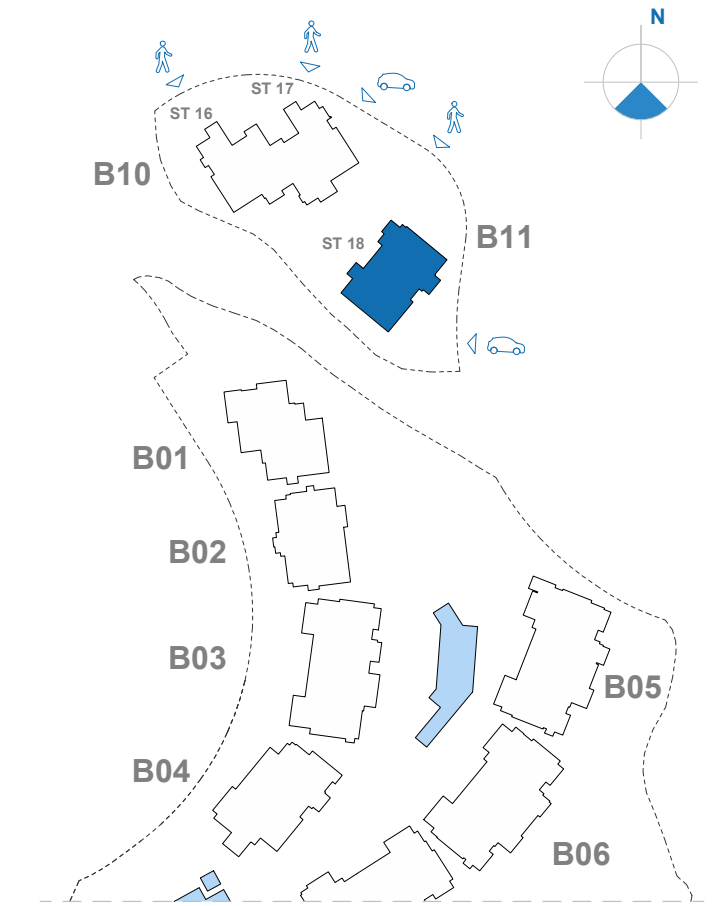
APARTMENT 18.1.1

2 BEDROOMS

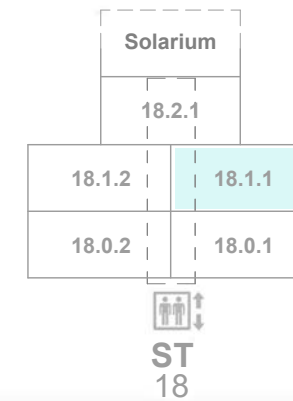


E: 1/100

Site Plan



Block 11 Stairway 18



Apartment 18.1.1 2 BEDROOMS

Indoor Usable Area 105,19 m²
Terrace Usable Area 32,91 m²

Total Usable Area 138,10 m²

Indoor Constructed Area 124,64 m²
Terrace Constructed Area 36,32 m²

Total Constructed Area 160,97 m²

C.A.W.E.U.

PALO ALTO OJÉN - MARBELLA



124,64 m²



36,32 m²



This document is for information only. The areas and measurements shown are approximate and may be modified for technical reasons and/or administrative issues. All furniture shown is for illustrative purposes.
*APT: Apartment // SOL: Solarium // BAS: Basement // Apartment Code: Stairway - Floor - Apartment // C.A.W.E.U.: Common Area With Exclusive Use